



PROCEEDING PROCEEDING BOOK BOOK



INTERNATIONAL
CONFERENCE
2019

SURABAYA
2-3 SEPTEMBER 2019

PARTNERSHIP



ITS
Institut
Teknologi
Sepuluh Nopember



EDITORIAL BOARD

Chief Editor:

Prof.Dr. Eko B Djatmiko

Editors:

Dr. Siti Zullaikah

Dr.techn. Endry N Prasetyo

Dr.-ing. Setyo Nugroho

Eka Wahyu Ardhi, ST, MT

Rizki Eka Nafiandia, ST

Fitri Faizatul Izza, ST

PREFACE

SIDI International Conference 2019 (SIDI IC 2019) is organized by the Consortium of Sustainable Island Development Initiatives (SIDI) of Institut Teknologi Sepuluh Nopember (ITS), held at the Research Center Building, ITS Campus – Surabaya on 2nd – 3rd September, 2019. This is to provide a forum for exchanging views, ideas, perspectives, research results, academic and business experiences from the stakeholders who have certain concerns to the community and environment of small islands from around the world. Overall this forum is expected to offer a good opportunity to build relationships and also provide dynamic foundations in the effort of developing small islands in sustainable manners.

The current conference is organized in collaboration with a number of national partners, namely the Ministry of Marine Affairs and Fisheries, Ministry of Foreign Affairs, Ministry of Tourism, Ministry of Village, Development of Disadvantaged Regions and Transmigration, University of Pattimura, University of Airlangga, and Maritime Polytechnics Surabaya. Further, the collaboration is also established with the international partners, namely Wismar University of Applied Sciences, Technische Universität Berlin and Deutscher Akademischer Austauschdienst of Germany.

This book contains the papers delivered during the SIDI IC 2019, classified in five main topics:

- A. Biodiversity & Marine Tourism;
- B. Marine Technology & Connectivity.
- C. Food Security, Healthcare & Cultures;
- D. Education, Employability, & Micro Business;
- E. Environment, Fishery & Energy;

In this valuable opportunity, the committee is deeply grateful to the support and sponsorships from LPPM-ITS, PT Duta Marine, PT Meratus Line, PT Palka Sarana Utama, PT Citra Mas, PT Duta Marine Perdana, PT Wide & Pin, PT Pranala Digital Transmaritim and the Indonesian Maritime Partnership Collaboration (IMPC).

Finally, the committee is greatly thankful and conveys best wishes to all the participants of the SIDI International Conference 2019.

Best regards,

Eko B Djatmiko

Chairman of the Committee

SCIENTIFIC COMMITTEE

- Prof.Dr. Eko B Djatmiko – Institut Teknologi Sepuluh Nopember, Indonesia
- Prof.Dr. Norbert Gruenwald – Wismar University of Applied Science, Germany
- Prof.Dr.-Ing. Christian Stollberg – Wismar University of Applied Science, Germany
- Prof.Dr. Raoul Bunschoten – Technische Universität Berlin, Germany
- Prof.Dipl.-Ing. Dr.techn. Michael Murkovic – Graz University of Technology, Austria
- Prof.Dr. Mehmet Atlar – University of Strathclyde, The United Kingdom
- Prof.Dr. Ismail H Helvacioğlu – Istanbul Teknik Üniversitesi, Turkey
- Prof.Dr. Takeshi Shinoda – Kyushu University, Japan
- Prof.Dr. Suttichai Assabumrungrat – Chulalongkorn University, Thailand
- Prof.Dr. Arshad bin Ahmad – Universiti Teknologi Malaysia (UTM), Malaysia
- Prof.Dr-Eng. Yanuar – Universitas Indonesia, Indonesia
- Prof.Dr. Sunaryo – Universitas Indonesia, Indonesia
- Prof.Dr. I Ketut AP Utama – Institut Teknologi Sepuluh Nopember, Indonesia
- Prof.Dr. Ketut Buda Artana – Institut Teknologi Sepuluh Nopember, Indonesia
- Dr.-Ing. Wolfgang Busse Gruenwald – Wismar University of Applied Science, Germany
- Dr. Rafet E Kurt – University of Strathclyde, The United Kingdom
- Dr. Gibson S Nyanhongo – University of Resources and Life Sciences Vienna, Austria
- Dr. Armando T. Quitain – Kumamoto University, Japan
- Dr. Yi Hsu Ju – National Taiwan University of Science and Technology, Taiwan
- Dr.-Ing. Setyo Nugroho – Institut Teknologi Sepuluh Nopember, Indonesia
- Dr. Heri Supomo – Institut Teknologi Sepuluh Nopember, Indonesia
- Dr.techn. Endry N Prasetyo – Institut Teknologi Sepuluh Nopember, Indonesia
- Dr. Siti Zullaikah – Institut Teknologi Sepuluh Nopember, Indonesia
- Dr.-Ing. Haryo Sulistiyarso – Institut Teknologi Sepuluh Nopember, Indonesia

ORGANIZING COMMITTEE

Chairman:

Prof.Dr. Eko B Djatmiko

Secretary:

Dr.-Ing. Setyo Nugroho

Treasury:

Murdjito, MSc.Eng

Ir. Triwilaswandio W Pribadi, MSc

Dr. Heri Supomo

Fitri Faizatul Izza, ST

Conference Section:

Dr.techn. Endry N Prasetyo

Dr. Siti Zullaikah

Aditya Pamungkas

Moch. Faisal Muharram, SH, ST

Promotion Section:

Dr.-Eng. IGN Sumantha Buana

Rizki Eka Nafiandia, ST

Jalu Prasetya Mulya

Pujangga Mafianus Argi

General Support Section:

Eka Wahyu Ardhi, ST, MT

Moch. Faisal Muharram, SH, ST

Vera Dwi Anisa

Intan Rekyan Imandita

Rizal Yuliono

Fernando Bagasta Sinulingga

Documentation Section:

Antoni Priyambodo
Akmal Naufal Ramadhan
Ryan Tenrijuang Hindar Jaya
Raihan Hadyanta
Aveshina Dian Widiarto

Food & Beverages Section:

Shinta Johar Alif Rahadi
Anggit Larasati
Bowo Kerta Saputra
Moch. Kresna Alvian Pratama

Transportation Section:

Riza Alfian Arief Wardana
Rinaldi Eko Sarjono
Mohammad Idham Harari
Fachrul Nizar Exact Anoraga

Sea Cruise Gala Dinner:

Dwi Yanti M, SKom., MSc BLM
Capt. Damoyanto Purba, SSiT, MPd
Monika Retno Gunarti, SSiT, MPd
Anak Agung IS Wahyuni, SSiT, MSda
Dwi Haryanto, MM
Ari Yudha Lusiandri, MPd
Maulidiah Rahmawati, SSi, MSc
Antonius Edy Kristiyono, MPd
Capt. Tri MB Hartanto, SSiT, MPd
Sri Mulyanto Herlambang, ST, MT
Cornelius Rumambi, SE, MM
Yan Kusdyana, AMd

CONTENTS

A. BIODIVERSITY & MARINE TOURISM

- A1 Distribution of Phytoplankton in Pangkep Waters, South Sulawesi, Indonesia A1 - A19
H Thoha, M D Bayu, A Rachman, A K Nasution and T Siswantining
- A2 Integrated Tourism Transportation Software Design: Case Study of Lombok Island A20 - A38
I T Yuniyanto, S Nugroho and M B Ilham
- A3 Hydro-Oceanographic Mapping to Support Coastal Eco-Tourism Activities in Bawean Island, East Java A39 - A52
H D Armono , Sujantoko, Z Hidayah and Nike I Nuzula

B. MARINE TECHNOLOGY & CONNECTIVITY

- B1 Design and Analysis of Trimaran Feeder Ships as a Connector for Small Islands in the Maluku B1 - B8
R B Luhulima, Fella G, Sutiyo and IKAP Utama
- B2 Operational Limitation of Indonesian Traditional Wooden Boat in the Framework of the Second Generation Intact Stability Criteria B9 - B17
D Paroka, A H Muhammad, S Rahman and M A Azis
- B3 Sleeper Seat Design for Inter-Island Speed Vessel with Integrated Digital Design Method B18 - B21
A Windharto and N S Y Mustafa
- B4 Analysis of the Effect of Hull Vane on Ship Resistance Using CFD Methods B22 - B29
Kiryanto, U Budiarto and A Firdhaus
- B5 The Characteristic, Performance, Accessibility, and Prediction of Loading and Unloading of Goods in Probolinggo New Terminal Port B30 - B49
Priyambodo and S H Sutanto
- B6 Packaging Development Study for Archipelagic Sea Transportation B50 - B62
I T Yuniyanto, S Nugroho and S J A Rahadi
- B7 Conceptual Design of Search and Rescue (SAR) Centre for Western Regions of Indonesia B63 - B68
H I Nur, F Hadi and N K P Maharani

- B8 Air Transportation and Its Role for Islands Connectivity in Supporting Regional Development B69 - B75
E Ahyudanari
- B9 Economic Study on the Construction of a 50 MW Ocean Thermal Energy Conversion (OTEC) Facility in Banten Province, Indonesia B76 - B83
S Rahmawati, A I Muna and W Wardhana
- B10 Simulation of LNG Distribution for Power Plant in Maluku and Papua Region B84 - B91
C D Pratiwi, A A B D D Putranta and K B Artana
- B11 Fire Risk Assessment on Floating Storage Regasification Unit (FSRU) B92 - B98
D H Baskoro, K B Artana and A A B D D Putranta
- B12 The Investigation of Life Cycle Costs of Mobile Harbour Crane: A Case Study of Berth Crane in Berlian Terminal Tanjung Perak Surabaya B99 - B107
E J Simatupang, R O S Gurning and D W Handani
- B13 Connectivity Model of Archipelagic Areas: Case Study of Kepulauan Riau B108 - B115
T Achmadi, H I Nur and F N Banjarnahor
- B14 Study on Integration of Ships E-Ticketing Services for Passengers in E-Commerce B116 - B124
M A Luhur P, S Nugroho and R E Kurt
- B15 Telematic Transportation Architecture on Electronic Payment System at People's Shipping B125 - B132
F Tetuko P, S Nugroho and T Tezdogan
- B16 Adaptive Controller for Unmanned Surface Vehicle Type Monohull LSS01 Autopilot System and Guidance Design B133 - B148
Anang M, Rusdhianto E A K, Nurlita G, A Santoso, Y Bilfaqih, M Sahal and Z Hidayat
- B17 Dynamic Modelling and Controlling Unmanned Surface Vehicle B149 - B159
Fachruddin A S, Rusdhianto E A K, Nurlita G, A Santoso, Y Bilfaqih and Z Hidayat
- B18 Design of Autopilot Control System on Unmanned Surface Vehicle Type Monohull LSS-01 Using Model Reference Adaptive Control Statefeedback in Waypoint Control B160 - B173
F Rahmasari, Rusdhianto E A K, Nurlita G, A Santoso, Y Bilfaqih and T Agustinah

B19	Autopilot System Design on Monohull USV- LSS01 Using PID Based Sliding Mode Control Method M F A Alim, Rusdhianto E A K, Nurlita G, A Santoso, Y Bilfaqih and M Sahal	B174 - B186
B20	Risk Analysis of Scrubber Vessel Using Risk-Based Inspection Method in Geothermal Power plant N Siswanto, D Priyanta, M B Zaman, Semin and P S Andaka	B187 - B201
B21	Unbalance Load Analysis on Closed Bus Electrical System of Ship's Dynamic Positioning Based on Matlab Simulation S Sarwito, Semin, M B Zaman, Soediby and I Fawaiz	B202 - B210
B22	Design of Lighter Aboard Ship (Lash) for Distribution of Goods in Small Islands: Case Study in Kangean Islands R Awwalin R, S Nugroho and W Busse	B211 - B220
B23	Design Model of Linier Generator on Marine Current Power Plant Based on Pneumatic System I R kusuma, Semin, M B Zaman, A Zubaidi and T D Cahyono	B221 - B233
B24	The Effect of Use of Biodiesel B30 from Palm Oil to Degradation of Oil Lubrication in 1-Cylinder Diesel Engine 4 Stroke A Iswanto, B Cahyono, M B Zaman and Semin	B234 - B238
B25	Laminated Mahogany and Teakwood as Construction Materials for Fishing Vessels S I Wahidi, T W Pribadi, M S Arif and G B Raharja	B239 – B246
B26	Modular System Construction for Laminated Wooden Fishing Vessel Industry T W Pribadi, M S Arif, S I Wahidi and I W Maditiara	B247 – B254
B27	Technical and Economic Analysis on the Using of <i>Hibiscus Tilaceus</i> , <i>Antocephalus Cadamba</i> and <i>Boehmeria Nivea</i> Bark Fibre for Fishing Vessel Mooring Rope H Supomo, A R Safaruddin and I Baihaqi	B255 – B266
B28	Unbalanced Load Analysis on Closed Bus Electrical System of Ship's Dynamic Positioning on a Laboratory Scale S Sarwito, Semin, M B Zaman, Soediby and R A Makarim	B267 – B274
B29	Investigation of Human Error for Ship's Accident Case Study: Singapore Straits M B Zaman, E Kobayashi, E B Djatmiko, Adi Maimun	B275 – B281
B30	Traffic Analysis for Enhancing Safety in the Singapore Straits Using AIS Data	B282 – B288

M B Zaman, E Kobayashi and A Zubaydi

- B31 Development of Safety for Marine Transportation in the Maratua Island B289 – B294

M B Zaman, E B Djatmiko, S Nugroho, Murdjito and W Busse

C. FOOD SECURITY, HEALTHCARE & CULTURE

- C1 Representation of the Greatness of Kambang Putih Seaport in the Past on *Ganggeng* Motif C1 - C6
F Ciptandi
- C2 Portable Grashof Incubator Completely Knock Down (CKD) Type New Design of Infant Incubators for Remote Areas to Reduces the Infant Mortality Rate C7 - C14
R A Koestoer and I Roihan
- C3 Risk Analysis of Milkfish Supply Chains in Semarang using House of Risk Approach to Increase the Supply Chain Resilience C15 - C21
R R P Purwaningsih and F Hermawan
- C4 Injectable Composites Aglinate/PVA/Chitosan as Scaffold Material for Nucleus Pulposus Regeneration C22 - C29
H V Suryandaru, A I Aziz, N Hanifah and A Rasyida
- C5 The Development Strategy for Sustainable Livestock Sector in Small-Islands Region: a Preliminary Study on Native Cattle Traditional Farming in Buru Island, Maluku Indonesia C30 - C40
S Kuswaryan, A R Daud, C Firmansyah and S Tejaningsih
- C6 Analysis of Angle Comparison for the "Kuwung" Pattern Module Development based Additive Manufacturing Method using 3D Filament from Recycled Plastic Waste Material C41 - C51
D B Prihandana and D Kuswanto
- C7 Temporal Dynamic of the Plankton Community Structure in Madura Strait: Algae Bloom Study Case C52 - C56
D Saptarini, F K Muzaki and A S Ibadah
- C8 Biogas Production from Co-Digestion of Water Hyacinth, Fruit and Vegetable Wastes using an Aerobic Digester C57 - C62
Soeprijanto, D H Prajitno, B Setiawan, W Maghfiro and R Rohmawati
- C9 Processed Nutrition Analysis of Milkfish in Kelurahan Keputih East Surabaya C63 - C67
A Rosyidah, E P Setyaningsih, I K Murwani, R Ediati and T Q Romadiansyah

- C10 Processed Nutrition Contents based on Raw Seaweed: Economic Improvement Efforts in Dolly Localizations C68 - C72
A Rosyidah, E P Setyaningsih, R Ediaty and R Y Kurniawan
- C11 Impact of Ricification on Local Food System in Tanimbar Island, Maluku Tenggara Barat, Indonesia C73 - C86
N Nurfitriani and R Hindersah
- C12 Optimization on Spatial Arrangement in Moringa-Food Crop Alley Cropping to Optimize Farming Income on Small Potteran Island Sumenep Regency C87 - C91
Kustiyani, Isdiantoni, I Ekawati, M Faisal, H D Wati, E N Prasetyo and C Stollberg
- C13 Policy and Pricing of Seaweed Seeds (Case Study in the Seaweed Nursery Unit of the "Bahari Mandiri" Fishing Group) C92 - C99
Isdiantoni, P Ratna W, Aryo W, E N Prasetyo and C Stollberg
- C14 Psychological Preparedness for Disaster of Coastal Communities: A Systematic Review Study C100-C110
L S Palupi
- C15 Psychological Wellbeing of Coastal Communities in Surabaya: A Preliminary Study C111-C116
L S Palupi
- C16 A Non-catalytic Process to Produce Levulinic Acid from the Flesh Fruits of Trembesi (*Samanea saman*) using a Subcritical Water C117-C124
Y A Pujiastuti, Siti Zullaikah, D Setiawan, I Fahruryo, A R Syafril and Y Prawira
- C17 Deacidification of Rice Bran Oil using a Deep Eutectic Solvent C125-C130
A Jannah, F Maulita, S Zullaikah, M Rachimoallah and Y H Ju

D. EDUCATION, EMPLOYABILITY, & MICRO BUSINESS

- D1 E-Commerce Logistics System for Indonesia's Cinnamon Exports D1 - D7
H I Nur, S Nugroho and F Devira
- D2 The Logistics System Planning for Red Onion: Case Study of Sulawesi Island and Maluku Island D8 - D16
A Mustakim, S Buana and H Widayanti
- D3 Community Empowerment of Plabuan Village Jombang to Create Independent and Sustainable Kelor Village D17 - D22
W Muslihatin, K I Purwani, D Ermavitalini, E N Prasetyo, S Nurhatika, T Nurhidayati, N Jadid, A Febrianti, N S Yunas, A Raikhani and L R Sari

E. ENVIRONMENT, FISHERY, & ENERGY

- E1 Households Electricity Consumption Patterns in Kepulauan Seribu Regency, DKI Jakarta (Case Study: Small Island) E1 - E8
W Nispu P, T Nurlambang and M H D Susilowati
- E2 Climate Change, Small Island and Resilience: Case Study of Pangkajene Kepulauan E9 - E15
I Hidayati and H Setiadi
- E3 The Effect of Different Water Volume to Growth and Survival Rate of *Anguilla b. bicolor* E16 - E24
N Taufiq-Spj, J Hutabarat, A Trianto, R Ario, I Pratikto, Suryono, S Nabila and A Santoso
- E4 Design and Future Application of Mobile Fish Platform for Local Fishermen in the Archipelago Regions E25 - E32
W R Hetharia, F Gaspersz and E R de Fretes
- E5 Survival Rate Ability of Unfed Eel *Anguilla b. bicolor* in Different Sizes and Sources of Eel Caught E33 - E36
N Taufiq-Spj, J Hutabarat, A Trianto, D N Sugianto, G W Santoso and A Indarjo
- E6 Differences in Electricity Consumption Based on Electricity User Sectors in Pramuka Island, Panggang Island and Tidung Island, Thousand Islands Regency, DKI Jakarta E37 - E52
R Rizaldy, T Nurlambang, M H Susilowati and H Anggrahita
- E7 Potential Areas for the Development of Renewable Energy System for Household Sectors in Kepulauan Seribu: A Case Study in Pari Island, Tidung Island, and Pramuka Island E53 - E62
V Khoirunnisa, T Nurlambang and M H Susilowati
- E8 Society Willingness to Pay towards Application of Renewable Energy for Household Electricity Needs in Kepulauan Seribu Regency E63 - E70
A Anastasya, H Setadi, H Anggrahita, and N Rizqihandari
- E9 Potential Areas of Renewable Energy System for the Needs of Tourism Sectors in Kepulauan Seribu: the Case Study in Putri Island and Ayer Island E71 - E80
N Kamilaha, T Nurlambang and M H Susilowati
- E10 Sturdy and Modular Concept of 2 in 1 Public Furniture Design by Recycling Massive Plastic Waste E81 - E90
B S Priandika, D Kuswanto and E Zulaikha

- E11 Identification of Underground River with Microtremor Method in Dersono Karst Area, Pacitan E91 - E101
A S Bahri, M I S Abdullah, M S Purwanto, A Widodo, A Hilyah, M H M Fajar, S A Aliyan, P V Hardyani, Sunardi, E W Alita, M Rahmat and I Nurfitriani
- E12 Utilization of *Moringa Oleifera* Seed Waste as Substrate in Lipase Production under Different Pretreatments E102 - E111
A R Irfansyah, M P Koentjoro, Isdiantoni, I Ekawati and E N Prasetyo
- E13 Analysing the Implementation of Global Sulphur Cap 2020 on Indonesian Tanker Shipping E112 - E129
S Nugroho, S D Lazuardi and E E N Faida
- E14 Effect of Indole 3-Acetic Acid (IAA) and 6-Benzyl Amino Purine (BAP) on *Nannochloropsis* sp. Biomass E130 - E139
D Ermavitalini, A E Rahayu, H B Kurniawan and E N Prasetyo
- E15 Black Soldier Fly Biowaste Treatment and Its Recycle Waste to Produce Chitosan E140 - E144
S Pintowantoro, Y Setiyorini, A M Aljauhari, F Abdul and H Nurdiansah
- E16 Development of Model on the Flood Prediction and Early Warning System for Way Ruhu – Ambon E145 - E152
M Marasabessy, M S Pallu, R T Lopa and M Thaha

OPERATIONAL LIMITATION OF INDONESIAN TRADITIONAL WOODEN BOAT IN THE FRAMEWORK OF THE SECOND GENERATION INTACT STABILITY CRITERIA

D Paroka^{1,4}, A H Muhammad², S Rahman¹ and M A Azis³

¹Department of Ocean Engineering, Hasanuddin University, Kampus Gowa Jl. Poros Malino Km. 6 Bontomarannu, Gowa, South Sulawesi, Indonesia

²Department of Marine System Engineering, Hasanuddin University, Kampus Gowa Jl. Poros Malino Km. 6 Bontomarannu, Gowa, South Sulawesi, Indonesia

³Magister Student of Department of Naval Architecture, Hasanuddin University, Kampus Gowa Jl. Poros Malino Km. 6 Bontomarannu, Gowa, South Sulawesi, Indonesia

⁴Correspondence address, mail : dparoka@eng.unhas.ac.id

Abstract. Recently, the International Maritime Organization developed the second generation intact stability criteria for all possible capsizing scenario in seaways with performance based approach. This paper presents application of the criteria to investigate operational limitation of an Indonesian traditional wooden boat for dead ship condition. The hydrodynamic characteristics of the ship are determined by model experiment except the effective wave slope coefficient is calculated using the simplified strip theory and the formula of weather criterion. The wave characteristics are described by JONSWAP spectrum based on the wave statistic of Flores sea and the gusty wind is calculated by Davenport spectrum. The results show that the Indonesian traditional wooden boat comply with the criteria when the down flooding angle is larger than 25.0 degrees. The vulnerability criteria level 1 and the vulnerability criteria level 2 of the criteria are not coincident when the effective wave slope coefficient is calculated using the formula of weather criterion but its are consistent if the simplified strip theory is used. The inconsistency could be appear due to the geometry characteristics of Indonesian traditional wooden boats are different with the geometry characteristics of ships used to develop the weather criterion as the vulnerability criteria level 1.

1. Introduction

The traditional wooden boat is a wooden ship built based on the experience of builder without design process like a modern ship. The traditional wooden boats are mostly used as cargo ships for inter-island transportation with short distance, inland ships or operated in restricted area especially in the region with minimum port facilities. They play an important role for sea transportation in Indonesia to develop connectivity of undeveloped regions, outermost area as well as isolated area to the main route of national sea transportation system. It has been stated in the regulation of national transportation system of Indonesia [1]. Even the number of traditional boats used for national sea transportation tends to decrease in the last decade [2], [3] but their role is still important in a certain region especially in eastern part of Indonesia.

As the boats were built traditionally without design process, the ship safety could not be measured in the beginning. Casualty report shows that capsizing accident in Indonesian seaways are dominated by traditional wooden boat [4]. This means that the operational safety should be improved in order to minimize the accident by introduce safety criteria applicable for non convention ships. In order to improve the safety the Indonesian government published regulation for non convention ships operating in Indonesia including stability [5]. This stability criteria was based on the general intact stability criteria of International Maritime Organization (IMO). Several parameters in this criteria seems to be difficult to apply to ships operating in Indonesia including the traditional wooden boats such as the downflooding angle mostly smaller than 40.0 degrees and the heel angle with maximum righting arm smaller than 25 degrees due to small freeboard and small draught compared to the ship breadth. Since this stability criteria depends only on the righting arm characteristics without considering the effect of external disturbance, it cannot be used to determine the operational limitation of the ships correspond to seaway condition. Information about the operational limitation is important reference to decide whether the ship is safely operated.

The lack of information about operational limitation or safety level in the stability criteria of IMO has been discussed within the last two decades. Finally the second generation of intact stability criteria of IMO is developed in order to provide safety level or safety index for each dangerous scenarios of ships in seaways. The safety level in dead ship condition is measure using the capsizing probability when the ship is operating in beam seas under certain sea state for exposure time of one hour. If a maximum acceptable safety level for the traditional wooden boats is available, the maximum sea state for ship safely operated in a certain loading condition can be determined. The safety index indicate by capsizing probability is calculated based on roll respon of ship under combined action of wind and waves. This method has been used to determined operational limitation of river-seas ship to obtained the range of metacentric height (GM) with safety index smaller than the minimum safety level according to the sea state of operational area of the ship [6].

This paper discusses about the operational limitation of the Indonesian traditional wooden boats based on the second generation intact stability criteria of IMO. The safety level indicated by the capsizing index can be obtained for different loading condition and metacentric height as well as the limitation of sea state for safely operation. The results can verify the possibility of implementation the criteria on the Indonesian traditional wooden boats. Since the characteristics of Indonesian seaways are heterogen depending on the location or region, this method can be a usefull tools to evaluate the possibility of the traditional wooden boats to operate in a certain route. This paper may also becomes the starting point to determine the acceptable safety level and implement as a part of stability criteria for traditional wooden boats operating in Indonesia.

2. Methodology

2.1. Capsizing index

The safety standard of ship in dead ship condition correspond to vulnerability level 2 is based on capsizing index which is calculated as the probability of ship roll angle exceeds a certain angle in seaways for a given exposure time. This probability depends on short term capsizing probability for the determined exposure time and the occurrence probability of significant wave height which can be written as the following equation [7]:

$$CI = \sum_{i=1}^N C_i S_i \quad (1)$$

where C_i is the short term capsizing probability for given exposure time and S_i is the occurrence probability of sea state indicated by significant wave height and zero crossing period of wave, respectively. N is the number of recorded data of the wave. The short term capsizing probability is calculated using the equation as follows [7]:

$$C_i = 1 - \exp(-\lambda_{EA}T_{EXP}) \quad (2)$$

where the capsizing rate, λ_{EA} is calculated using the following equation:

$$\lambda_{EA} = \frac{1}{2\pi} \sqrt{\frac{m_2}{m_0}} \left(\exp\left(-\frac{\Delta\phi_{EA+}^2}{m_0}\right) + \exp\left(-\frac{\Delta\phi_{EA-}^2}{m_0}\right) \right) \quad (3)$$

Here, T_{EXP} is the time exposure of 1 hour as recommended by IMO [7], m_0 is the variance of roll angle and m_2 is the variance of angular velocity of roll motion under action of combined wind and waves correspond to the sea state, respectively. The variance of roll angle and the variance of roll angular velocity are obtained by solving the single degree of uncoupled roll motion equation. The wave exciting moment is calculated based on the JONSWAP spectrum and the exciting moment due to gusty wind is calculated by using the Davenport Spectrum. $\Delta\phi_{EA+}$ is the range of positive stability in leeward direction starting from the static heel angle due to steady wind to the heel angle with the area under linearization of the righting arm at the static heel angle the same as the the area under the original righting arm curve and $\Delta\phi_{EA-}$ is that toward windward. The area under the righting arm curve is calculated from the static hell angle to the downflooding angle or the angle of vanishing stability of the ship which is one is the less. This range of heel angle could be larger than the downflooding angle or the angle of vanishing stability depending on the righting arm characteristics. The capsizing index is calculated by using the scatter wave data of Flores Sea for 10 years data recorded [8]. The number of occurrence for each combination significant wave height and zero crossing wave period is shown in Figure 1. The maximum significant wave height of this operational area is 2.7 meters and the maximum mean wave period of 12.0 seconds.

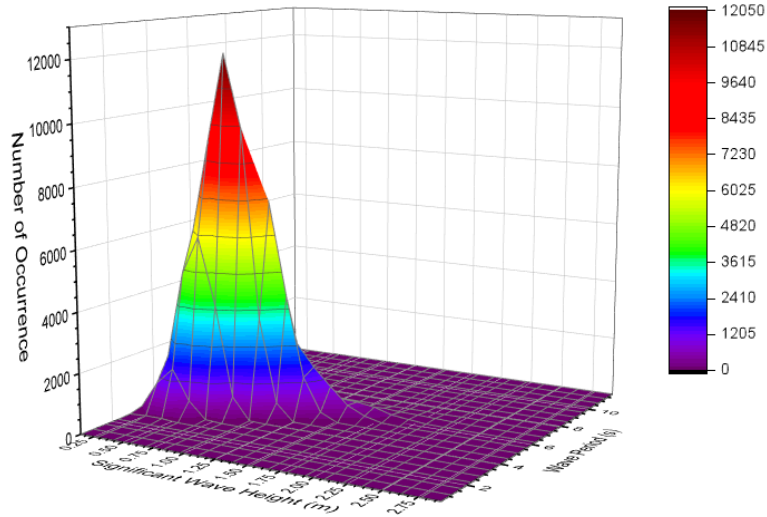


Figure 1. Scatter wave data of Flores Sea

The mean wind velocity is assumed to correlate with the significant wave height with its correlation shown in the equation (4). This equation is statistically developed based on the recorded data of Flores Sea [8]. This equation is different with that recommended by IMO which was determined following the scatter wave data of North Atlantic Ocean [7].

$$U_w = \left(\frac{H_s}{0.13} \right)^{0.85} \quad (4)$$

where U_w is the mean wind velocity and H_s is the significant wave height. The correlation between the significant wave height and the wind velocity based on the data in Flores Sea and that from the wave data of North Atlantic Ocean are shown in Figure 2.

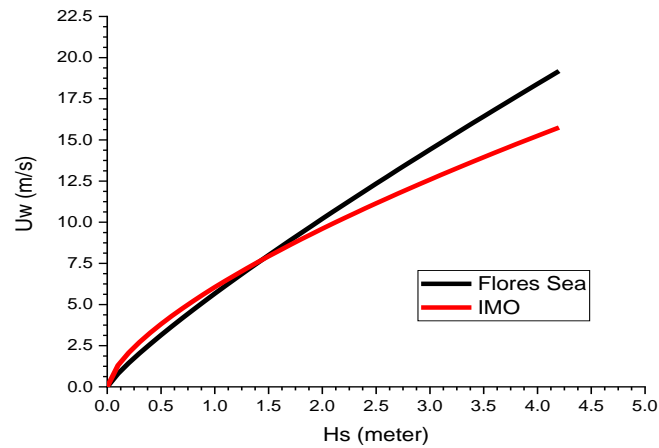


Figure 2. Mean wind velocity as function of significant wave height

2.2. Ship data

The ship data used in this paper is a wooden boat built in Bulukumba South Sulawesi with principle dimensions are shown in Table 1. The damping coefficients consist of linear dan quadratic damping coefficients as well as the natural frequency of roll motion are determined by model experiment. The effective wave slope coefficient as function of wave frequency is calculated by using simplified strip theory under assumption of Froude-Krylov exciting moment [9]. Alternatively the effective wave slope coefficient can be determined by using the formula of weather criterion of IMO [10] with assumption that this coefficient is independent of the wave frequency and it becomes zero when the wave length is smaller than a half of ship breadth. For ships with large vertical center of gravity and small draught, the formula of weather criterion may result in overestimate the effective wave slope coefficient. Some experimental results show that the maximum value of the effective wave slope coefficient is 1.0 [11], [12].

Table 1. Principle dimensions of subject ship

Items	Dimension (m)
Length overall (Loa)	22.80
Length of waterline (Lwl)	19.00
Breadth (B)	4.80
Height (H)	1.60
Draught (T)	1.12
Design metacentric height (GM)	0.92
Windage area (A)	40.79 m ²
Center of windage area from waterline (Z)	1.56
Downflooding angle	30.0 deg.

The capsizing index is calculated for full loading condition with several different metacentric height under assumption that the virtuil moment of inertia in roll direction is independent of the metacentric height. As result, the natural frequency of roll in upright position will change with the variation of metacentric height. The righting arm of the ship for vertical center of gravity of 3.0 meters is shown in

Figure 3. The righting arm for different vertical center of gravity is calculated based on the buoyancy lever arm from the ship keel which is constant as long as the ship draught does not change.

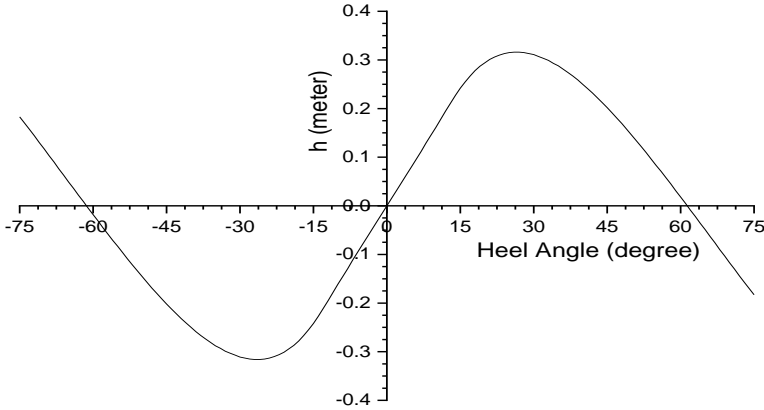


Figure 3. Righting arm of ship for vertical center of gravity of 3.0 meters

In order to determine the operational limitation consists of the range of metacentric height for several different sea state, the safety level recommended by IMO even it is not final index is used [7]. The results should be verify with the weather criterion because several ships show inconsistency between the weather criterion and the acceptable maximum capsizing index [7]. A ship comply with the weather criterion should also comply with the vulnerability level 2 of the second generation intact stability criteria for dead ship condition.

3. Results and discussion

Capsizing index of the subject ship for range of metacentric height starting from 0.20 meters to 2.0 meters is shown in Figure 4 for downflooding angle of 35.0 degrees, 30.0 degrees and 25.0 degrees with the effective wave slope coefficient calculated by simplified strip theory. The capsizing index increases as the downflooding angle decreases. It indicates that the range stability and the area under the righting arm has significant effect on stability of ship in beam seas. The traditional wooden boats mostly have enough large of stability range but have small downflooding angle because the weather deck is lower due to small freeboard. The opening on deck such as hatch coaming and the door using cannot be closed with watertight hatch cover or doors.

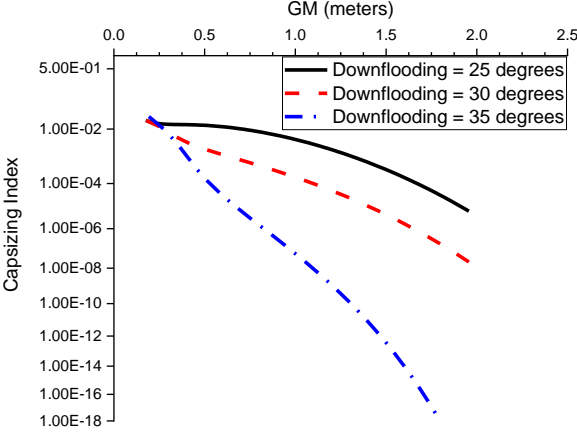


Figure 4. Capsizing index with effective wave slope coefficient obtained by simplified strip theory

For comparison means, the capsizing index was also calculated by using the effective wave slope coefficient obtained by the formula of weather criterion. Here, the effective wave slope coefficient is assumed to be independent of wave frequency but it becomes zero when the wave length is smaller than the ship breadth [13]. It is also assumed that the maximum effective wave slope coefficient is 1.0 [11]. The calculation results for the three different down flooding angle are shown in Figure 5. The same phenomena with the capsizing index obtained by using the effective wave slope coefficient is found but the present capsizing index is larger. This is because the effective wave slope coefficient obtained by the formula of weather criterion is larger than that obtained by the simplified strip theory. The formula of weather criterion was developed for ships with vertical center of gravity and draught ratio between 0.70 to 1.50 with ship length of 100.0 meters or more. Therefore, an alternatif method for estimation of effective wave slope coefficient for non-convention ships is necessary for practical point of view in the fututre.

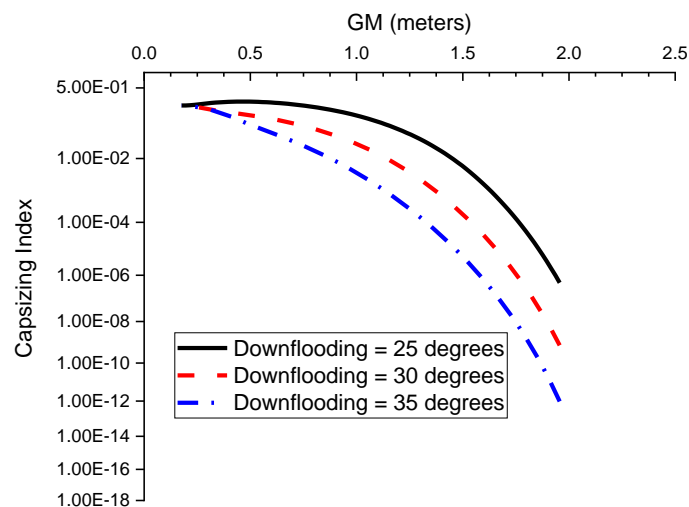


Figure 5. Capsizing index with effective wave slope coefficient obtained by formula of weather criterion

Following the safety index recommended by IMO for dead ship condition of 0.04 or 0.06 (still under discussion), the effective wave slope coefficient obtained by simplified strip theory give safety index smaller than the safety standard of IMO even for very small metacentric height. This is unrealistic result because the roll motion become unstable when the roll angle is larger than the angle of vanishing stability. This is because the simplified strip theory results in under estimate effective wave slope coefficient especially in the wave frequency the same as the roll natural frequency. The minimum metacentric height of the subject ship for down flooding angle of 25.0 degrees is 1.276 meters. Those are 0.916 meters for the down flooding angle of 30.0 degrees and 0.636 meters for the down flooding angle of 35.0 degrees when the effective wave slope coefficient is calculated by using the formula of weather criterion. When the safety index of 0.06 is used, the minimum metacentric height for the downflooding angle of 25.0 degrees is 1.196 meters, 0.796 meters for the downflooding angle of 30.0 degrees and 0.556 meters for the downflooding angle of 35.0 meters. In case of the actual metacentric height of the subject ship, the capsizing index for the down flooding of 25.0 degrees is 0.156 and 0.03768 for the down flooding of 30.0 degrees. When the downflooding angle is 35.0 degrees, the capsizing index is 0.00758. The smaller capsizing indexes correspond to the actual metacentric height are obtained if the effective wave slope coefficient is determined by simplified strip theory. Those calculation results show that the minimum metacentric height for the down flooding angle of 25.0 degrees is larger than the critical metacentric height for both effective wave slope coefficient. The safety of traditional wooden boat can be improved by increasing the down flooding angle by minimizing the number of opening or using watertight cover for the opening in the weather deck.

In order to verify the consistency of the safety standard from the obtained capsizing index with the stability limitation based on the weather criterion, the minimum metacentric height is also calculated based on the weather criterion for three different down flooding angle. Here, the wind pressure is corrected to be 170 Pa following the maximum wind velocity in the ship route of 15.0 m/s. The calculation results for the three different down flooding angle are shown in the Figure 7. The minimum metecentric height for the down flooding angle of 25.0 degrees is 1.556 meters correspond to the vertical center of gravity of 0.90 meters. The minimum metacentric height decreases to be 0.316 meters if the down flooding angle becomes 30.0 degrees. The same minimum metacentric height is obtained for the down flooding angle of 35.0 degrees. Inconsistency between the safety index of vulnerability level 1 and that for the vulnerability level 2 of the second generation intact stability criteria appears when the safety index for the vulnerability level 2 (capsizing index) is calculated by using the effective wave slope coefficient using the formula of weather criterion. The others parameter in the weather criterion such as the damping factors correspond to the breadth and draught ratio as well as due to the block coefficient could be not appropriate to apply for ship with geometry characteristic the same as the traditional wooden boats. It has been found that the damping factor correspond to breadth and draught ratio of ship with shallow draught and large breadth is smaller than that given in the weather criterion [14]. Therefore the minimum metacentric height obtained in the vulnerability criteria level one is larger than that obtained in the vulerability criteria level 2.

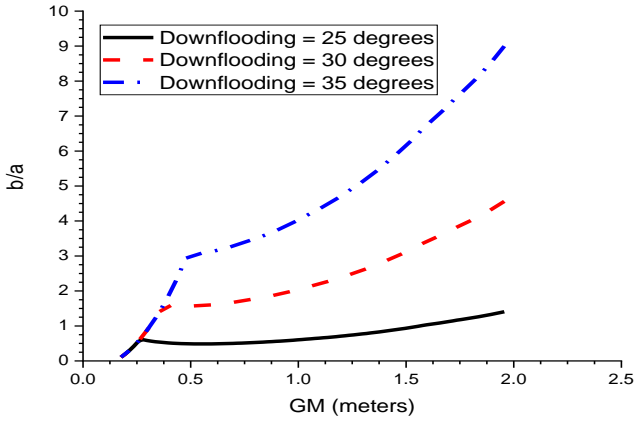


Figure 6. The vulnerability criteria level 1 for three different down flooding angle.

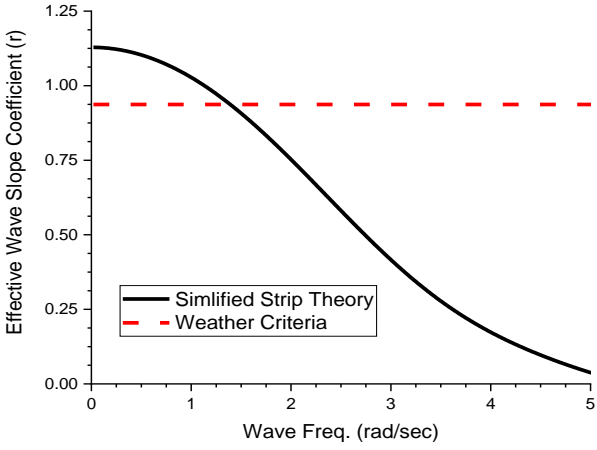


Figure 7. The effective wave slope coefficient

The consistency of the second generation intact stability criteria is achieved when the effective wave slope coefficient is calculated by using the simplified theory but unrealistic capsizing index is obtained for very large vertical center of gravity. This is because the effective wave slope coefficient in the resonance frequency is small so that the roll angle is small as result of small roll exciting moment. Figure 7 shows the effective wave slope coefficient obtained by the simplified strip theory for the vertical center of gravity of 1.541 meters. The effective wave slope coefficient obtained by simplified strip theory is larger than that obtained by the formula of weather criterion. Oppositely, the weather criterion result in a larger effective wave slope coefficient for higher wave frequency. The natural frequency of roll of the subject ship is 1.98 rad/sec which is the largest roll amplitude so that the weather criterion result in higher capsizing index. Some experimental results shown that the effective wave slope coefficient of ships with small freeboard and large breadth is smaller than those obtained by the weather criterion. However, it is impossible to conduct model experiment for large variation of wave frequency in practical point of view [15]. Alternative method to estimate the effective wave slope coefficient is using numerical simulation such as computational fluid dynamics (CFD).

4. Conclusions

The second generation intact stability criteria for dead ship condition is applied to an Indonesian traditional wooden boat to determine her operational limitation based on the scatter wave data of Flores Seas. Based on the obtained results and discussion, some conclusions can be described as follows:

1. The minimum metacentric height of an Indonesian traditional wooden boat has been determined based on the second generation intact stability criteria of IMO consists of the weather criterion as the vulnerability criteria level 1 and the capsizing index as the vulnerability criteria level 2. The subject ship does not comply with the criteria if the down flooding angle is 25.0 degrees or smaller. Therefore, the deck opening in the weather deck should be design to be watertight in order to increase the down flooding angle.
2. Both vulnerability criteria level 1 and level 2 shows inconsistency following the structure of the second generation intact stability criteria for dead ship condition when the effective wave slope coefficient is calculated by using the formula of weather criterion but it is consistent when the simplified strip theory is used for both safety standard of 0.04 and 0.06. This is because the formula of weather criterion does not consider effect of wave frequency.
3. Damping factor correspond to the breadth and draught ratio as well as the block coefficient is the calculation of vulnerability criteria level 1 should be investigated in advance because the values correspond to those parameter in the weather criteria of IMO could be overestimate when applied to the traditional wooden boats. The geometry characteristics of Indonesian traditional wooden boats are out of the range of geometry characteristics used to determine the values of parameters in the criteria.

5. References

- [1] Ministry of Transportation, 2008, Undang-undang Republik Indonesia nomor 17 tahun 2008 tentang pelayaran, Jakarta
- [2] WicaksonoYW, Nugroho S and Yunianto IT, 2017, *J. Teknik ITS* **6** 2337
- [3] Syafril KA, 2018, *J. Penelitian Transportasi Laut* 20 1.
- [4] Komite Nasional Keselamatan Transportasi, 2009, Kajian analisis trend kecelakaan transportasi laut tahun 2003 – 2008, Jakarta
- [5] Ministry of Transportation, 2009, Non-convention vessels standard Indonesian flagged, Chapter II Construction, Jakarta 251 – 263
- [6] Rudakovic S and Backalov I, 2018, Proceedings of the 13th International Conference on the Stability of Ships and Ocean Vehicles, Kobe, Japan 271 – 282
- [7] IMO, 2015, SDC 3/INF. 10 Annex 1: Proposed amendments to part B of the 2008 IS code to assess the vulnerability of ships to the dead ship stability failure mode, London

- [8] Berrisford P, Dee DP, Poli P, Brugge R, Fielding K, Fuentes M, Kallberg PW, Kobayashi S, Uppala S and Simmos A, 2019, The ERA interim archive version 2.0. ERA report series 1, <http://ecmwf.int/en/elibrary/8174-era-interim-version-20>
- [9] IMO, 2013, SDC 1/INF. 6 : Vulnerability assessment for dead ship stability failure mode, London
- [10] IMO, 2008, The international code on intact stability (2008 IS CODE), London
- [11] Francescutto A, Serra A and Scarpa S, 2001, Proceedings of the 20th International Conference on Ocean, Offshore and Arctic Engineering, Brazil 829 – 836
- [12] Ishida S, Taguchi H and Sawada H, 2011, Contemporary ideas on ship stability and capsizing in waves : evaluation of the weather criterion and its effect to the design of a ropax ferry, Springer, London 65 – 78
- [13] Bulian G and Francescutto A, 2004, *J. of Eng. for the Maritime Env.* **218** 189
- [14] Deakin B, 2008, *int. J. Mar. Eng.* **150** 56.
- [15] Sato Y, Taguchi H, Ueno M and Sawada H, 2008, Proceedings of the 6th Osaka Colloquium on Seakeeping and Stability of Ships, Osaka, Japan 335 - 341

Acknowledgments

The content of this paper is a part of research supported by Directorate General of Higher Education (DIKTI) and Hasanuddin University. The authors express their sincere gratitude to those institutions for their support.